






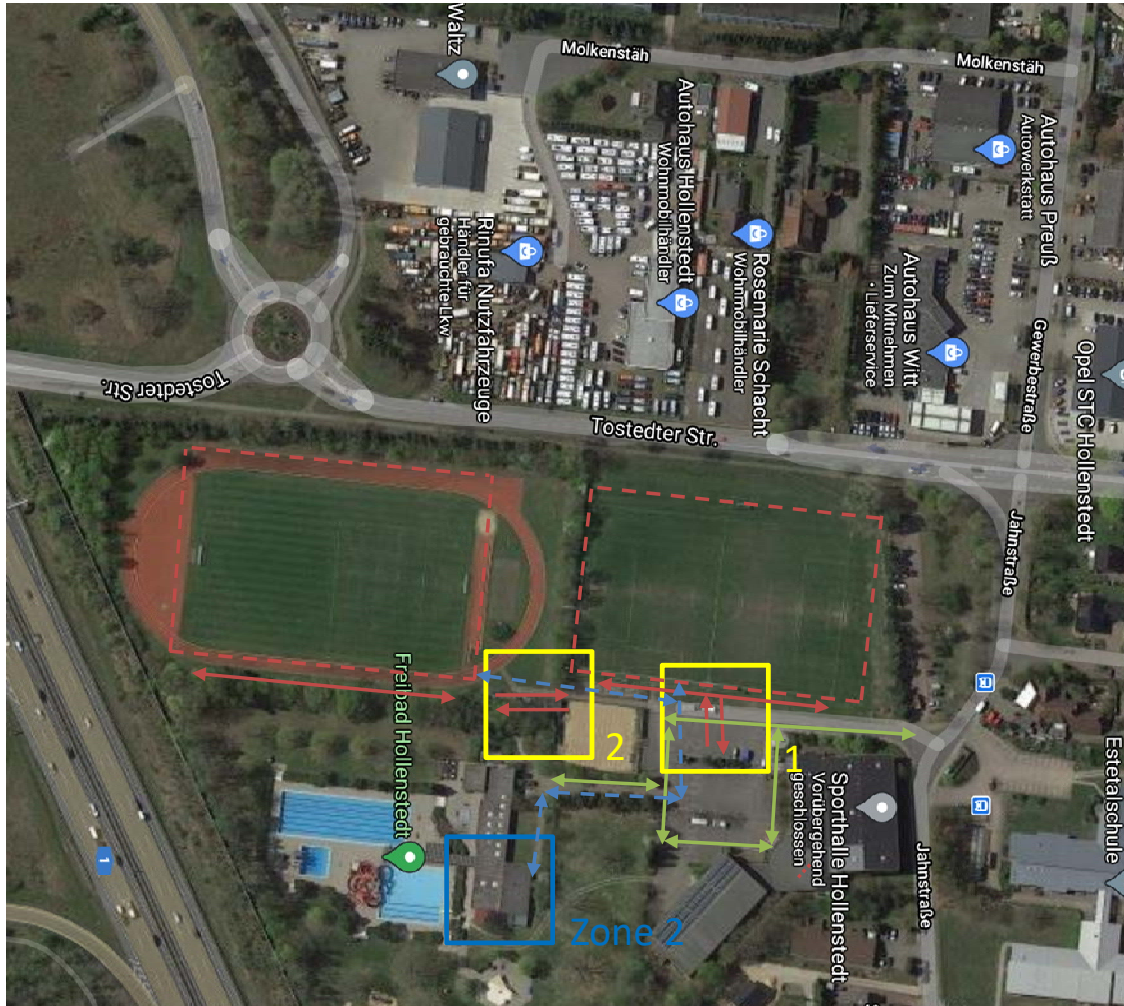






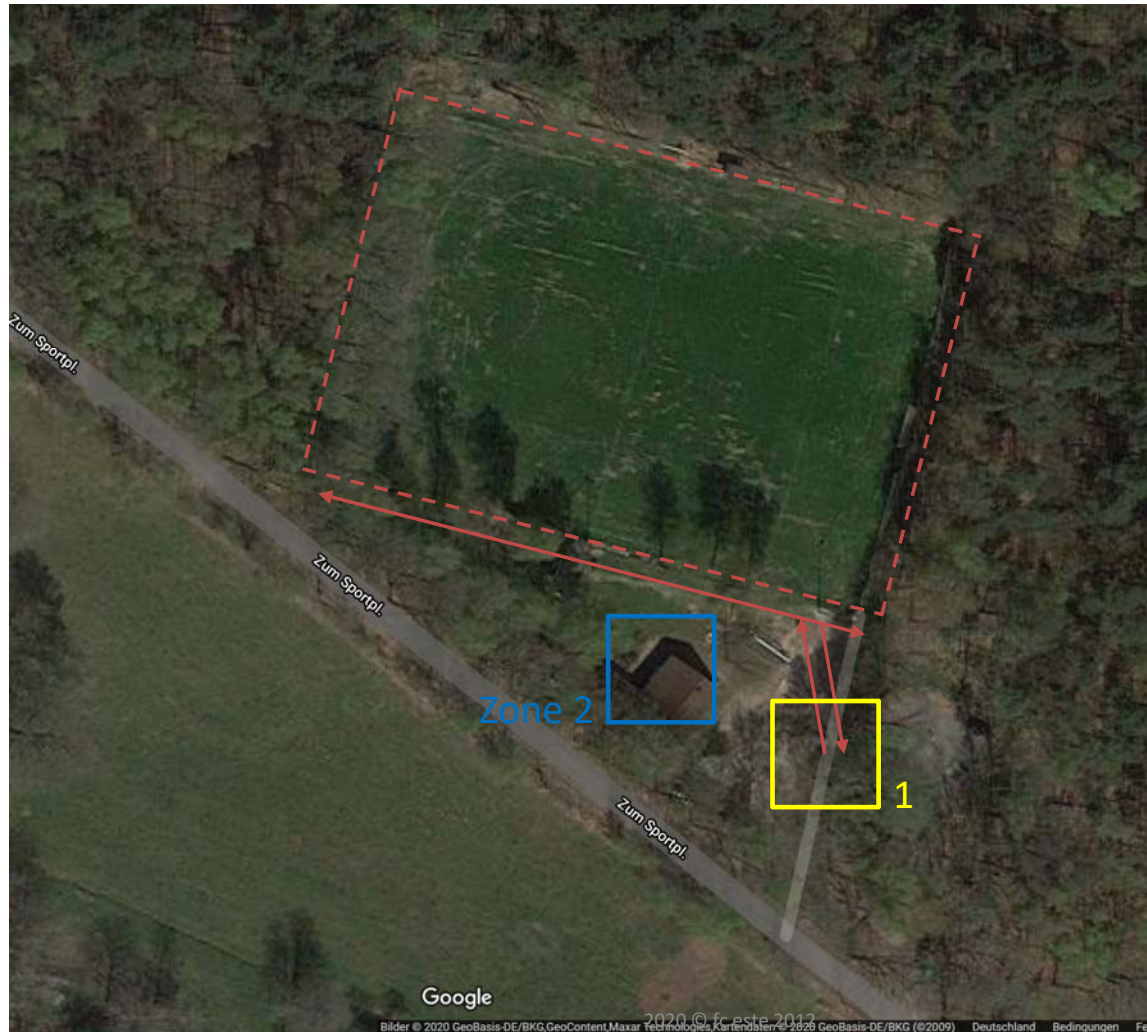






-  Zone 1 innerhalb der roten Markierungen
-  Richtung (und bezeichnet Zone 3)
-  Nur geöffnet, wenn hintere Zone 1 nicht bespielt wird (Zone 3)
-  Este-Wanderweg (öffentlich)
-  1+2 Einlasspunkte
-  3-5 Überwachungspunkte
-  Zone Zone 2 (Umkleidekabine Spielende)



-  Zone 1 innerhalb der roten Markierungen
-  Richtung (und bezeichnet Zone 3)
-  Nur genutzt, vor/nach dem Spiel und Pausenbeginn/-ende
-  Öffentlicher Bereich
-  1+2 Einlass- / Auslasspunkte
-  Zone Zone 2 (Umkleidekabine Spielende)



-  Zone 1 innerhalb der roten Markierungen
-  Richtung (und bezeichnet Zone 3)
-  Einlass- / Auslasspunkt
-  Zone 2 (Umkleidekabine Spielende)